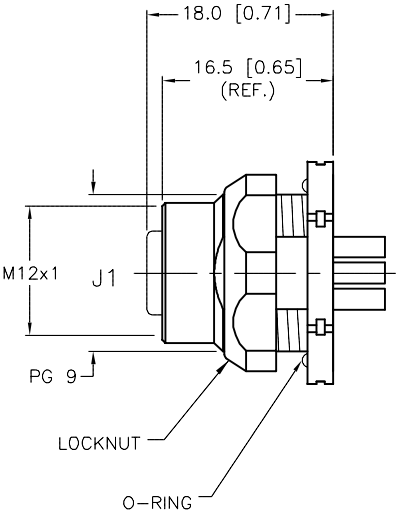
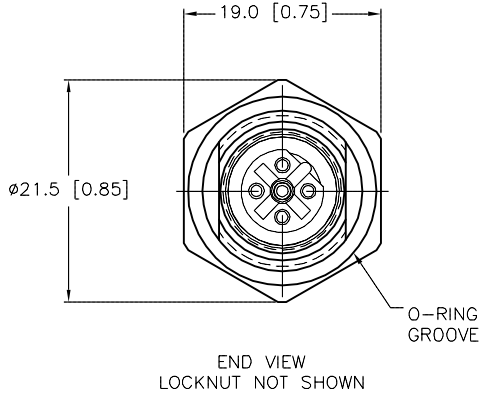
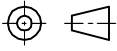


FEMALE END VIEW		TYPICAL PANEL CUTOUT		SPECIFICATIONS	
				CONTACT CARRIER MATERIAL	NYLON OR TPU
				CONTACT MATERIAL/PLATING	BRASS/GOLD
				RATED CURRENT [A]	4.0 A
				RATED VOLTAGE [V]	250 V
				HOUSING, LOCKNUT MATERIAL/PLATING	BRASS/NICKEL
				NUMBER OF CONDUCTORS [AWG]	SOLDER CUPS, 20 AWG MAX.
				TEMPERATURE RATING	-30°C to +80°C (-22°F to +176°F)
				PROTECTION CLASS	MEETS NEMA 1,3,4,6P AND IEC IP68
				MAX. PANEL THICKNESS	3.0 [0.12]



SOURCE DRAWING - FOR REFERENCE ONLY

RELATED DOCUMENTS				3RD ANGLE PROJECTION		THIS DRAWING IS CONFIDENTIAL AND THE PROPERTY OF TURCK INC. USE OF THIS DOCUMENT WITHOUT WRITTEN PERMISSION IS PROHIBITED.		3000 CAMPUS DRIVE MINNEAPOLIS, MN 55441 1-800-544-7769 (763) 553-7300 (763) 553-0708 fax turck.com	
1. 2. 3. 4.						DRFT RDS		DATE 01/18/10	
MATERIAL SEE SPECIFICATIONS				ALL DIMENSIONS DISPLAYED ON THIS DRAWING ARE FOR REFERENCE ONLY		DSGN		SCALE 1=.8	
FINISH SEE SPECIFICATIONS				CONTACT TURCK FOR MORE INFORMATION		UNIT OF MEASUREMENT MILLIMETER [ INCH ]		DESCRIPTION FKFDLW 4.5	
B DRAWING PROCESSED AS PART OF ECO 33971				CBM 04/07/11		33971		IDENTIFICATION NO. U4509-0	
REV DESCRIPTION				BY DATE ECO NO.		DO NOT SCALE THIS DRAWING		FILE: U4509-0	
								REV B	
								SHEET 1 OF 1	